

The native *Palythoa caribaeorum* overgrows on invasive species in the intertidal zone

Received: 1 October 2008 / Accepted: 1 November 2008
© Springer-Verlag 2008

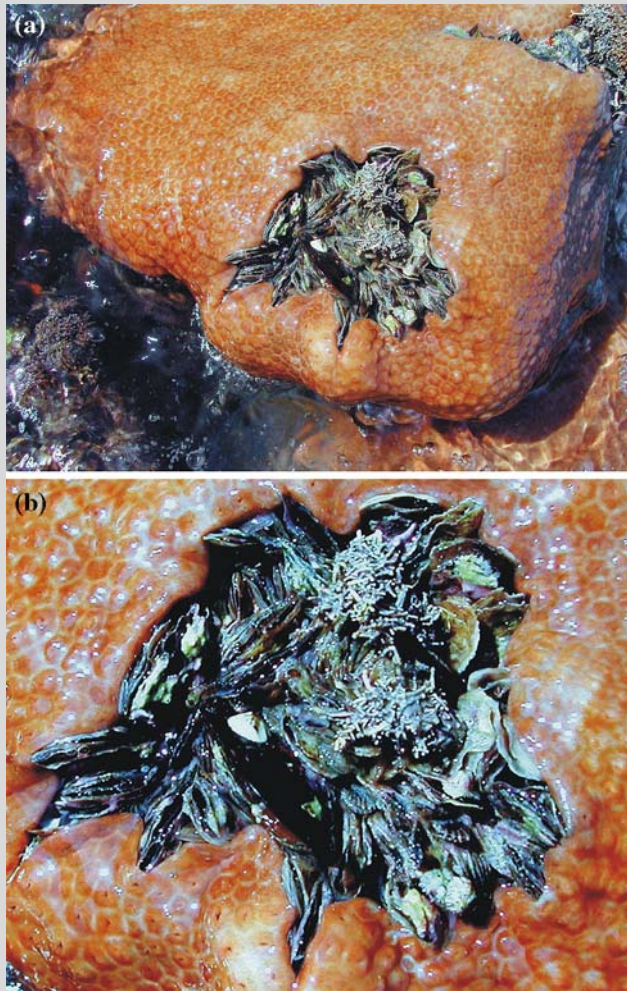


Fig. 1 **a** Colonies of *Palythoa caribaeorum* overgrowing on intertidal *Isognomon bicolor* bank, **b** close-up of overgrown *I. bicolor*

Reference

Wahl M (2008) Ecological lever and interface ecology: epibiosis modulates the interactions between host and environment. *Biofouling* 24:427–438

J. P. Mendonça-Neto (✉) · B. A. P. da Gama
Departamento de Biologia Marinha, Universidade Federal Fluminense, PO Box 100644, CEP 24001-970 Niterói, RJ, Brazil
e-mail: zepolicarpo@gmail.com

Reef sites

Coral Reefs
DOI 10.1007/s00338-008-0449-5