

316. SIPHONARIA ATRA.

Siphonaria atra, Quoy et Gaim. Voy. de l'Astrol. vol. ii. p. 337, pl. 25. f. 41, 42.

Painted inside with broad black stripes. Found also in Japan and the Pacific Islands. Length 1 inch.

5. Notes on *Zoanthinæ*, with the Descriptions of some New Genera. By Dr. J. E. GRAY, F.R.S.

M. Milne-Edwards, in his 'Coralliaires' (vol. i. p. 226), divides the *Actinidæ* into two groups:—one in which the covering of the body remains soft and does not form a polypoid; and, secondly, the *Zoanthinæ*, in which the integument of the body thickens and is strengthened with sclerotes, so as to form a coriaceous polypoid. But in the larger character of the family (at p. 298) he adds that they are aggregate polypes, which multiply by basal buds formed of the tegumental tissues; and he confines the family to the genera *Zoanthus* and *Palythoa*,—the first arising from root-like stolons, and the other from a broad laminal expansion.

There can be no doubt that the group so defined is very natural; but there are several genera of *Actinidæ* that have considerable relation to *Zoanthus*, not mentioned by Milne-Edwards, which do not come under either of these characters: that is to say, there are some which have the outer skin thick and strengthened with imbedded sand or calcareous particles, which are not aggregate and do not increase by basal buds, arising from neither root-like fibres nor an expanded base, but which are free; on the other hand, there are other genera which do not arise from basal buds, some of which have a thick cartilaginous skin not strengthened by sand or calcareous concretions, and others which have a thin membranaceous skin.

All these genera have only a single or double row of very short tentacles, which are placed round the edge of the oral disk far from the mouth, which when the oral disk is contracted are completely hidden.

I think that these animals should form a family distinct from *Actinidæ*, which may be called *Zoanthidæ*.

The zoanthoid polypes, in Lesueur, Dana, and Milne-Edwards's 'Coralliaires,' are divided into groups, according to the form of the base from which they arise,—some, as the *Zoanthi*, having cylindrical stolons, and others, as the *Palythoa*, an expanded foliaceous base; the latter are again divided according to whether the polypes are entirely or partially separate, or confluent nearly to the mouth of the cells,—all, no doubt, very good characters for the separation of the species into groups.

They separate themselves into two very natural groups, according to the structure of the external surfaces of the polypes.

In many, which may be called *Zoanthi malacodermi*, or soft-

skinned *Zoanthi*, or *Zoanthinæ*, the surface of the polype is smooth, soft, and fleshy.

Duchassaing and Michellot, in their 'Essay on the Corals of the West Indies,' have established some additional genera.

The base expanded, laminar.

1. MAMMILLIFERA, Lesueur.

Mammillifera, Duchassaing & Michellot, Mém. Coral. des Antilles, 51.

The base slender, subcylindrical, creeping.

2. ZOANTHUS, Cuvier, 179; M.-Edw. Coral. 299.

Zoantha, Lamk.

1. ZOANTHUS SOCIATUS, Ellis, Zooph.

2. ZOANTHUS ALDERI, Gosse, Brit. Sea Anem. 305, t. 9. f. 8, t. 12. f. 5.

Hab. Coast of Britain.

See other species (Duchassaing & Michellot, Mém. Coral. des Antilles, 1860, p. 49; Dana, Zoophytes, 423).

3. PALYTHOA.

The polypes close together, arising from a net-like anastomosing linear base.

PALYTHOA BERTHOLETI.

Solitary, rarely irregularly aggregate.

4. ISAURUS, Gray, Spic. Zool. 8, 1825.

Isaure, Savigny.

Isaurus, Duchassaing & Michellot, Mém. Coral. des Antilles, 1860, p. 51, t. 8. f. 10.

ISAURUS TUBERCULATUS, Gray, Spic. Zool. 8, t. 6. f. 3, 1825.

Hab. —.

B.M.

This genus and species was described and figured in 1825 from a specimen in the British Museum.

5. ? ORINIA, Duchassaing & Michellot, Mém. Coral. des Antilles, 54.
Separate.

6. PALES.

Body cylindrical; isolated, solitary, clustered, or sometimes proliiferous, but each specimen having a separate base; outer skin smooth, thin, olive-brown, slightly concentrically wrinkled; the tentacles numerous. The internal laminæ numerous, slender, only

slightly elevated, straight and parallel above, with a thickened edge and sinuous below.

PALES CLIFTONI. (Fig. 1, p. 236.)

Hab. Western Australia (*Mr. Clifton*).

The bodies are from $\frac{1}{3}$ to $\frac{1}{2}$ inch in diameter; but they vary greatly in length, some being as much as 2 inches long; but the general length seems to be about an inch,—that is to say, of the specimens in spirits; when alive they are probably longer. They are found attached to shells, both isolated and in clusters, and the larger ones are attached to the base of each other, forming a somewhat stellate cluster, as if they were free floating in the sea.

In others (the *Zoanthi sabuliferi*, or *Palythæina*) the outer surface of the polypes is hard, crustaceous, and thickened with imbedded grains of sand.

This group may be divided into sections by the habit of the animal, some being attached to marine bodies, and others living free.

I. *Coral free, unattached.*

1. SPHENOPUS, Steenstrup, Overs. Dansk. Vidensk. Selskabs. Forhandl. 1856, p. 37.

Sabella, sp., Schröter, Gmelin.

The type of this genus is an animal that was long ago figured as a *Sabella* by Schröter, and named from Schröter's figure *Sabella marsupialis* by Gmelin. Professor Steenstrup has found the original specimens in spirits, which were collected by Johns, the Moravian missionary, in Tranquebar, and has described them and their anatomy, under the name of *Sphenopus marsupialis*, in the 'Proceedings of the Danish Academy' for 1856. But I am not aware that any other specimen had been collected, until those which were sent to the Liverpool Museum. M. Milne-Edwards evidently has not seen them; for he places the genus *Stenopus* with the free-bodied, soft-skinned *Actinice*, giving a very short account of the animal, evidently extracted from Steenstrup's paper, and without even mentioning the habitat.

The body is free, rather variable in shape, but more or less like a small flask; the upper part is cylindrical, truncated when contracted, with a central opening; the hinder part is more or less compressed and half ovate, the hinder portion in some specimens being truncated or rounded, and in others more or less produced, with a blunt rounded end. The outer surface is hard, formed of agglutinated sand closely imbedded in a thick cartilaginous case. The upper truncated part of the case has some indistinct lines, which are often scarcely to be distinguished, radiating towards the central aperture; in one of the specimens there are three round sunken pits on each side of the neck of the body, just under the swollen edge of the truncated upper end. In some of the other specimens there are slightly

impressed longitudinal lines on the neck, where these pits are placed in the specimen above described.

The inner coat of the body is membranaceous, with sixteen membranaceous folds, which extend to the base of the body; the lower part of the cavity is filled with vermicular cylindrical ovaries.

The mouth of the outer case, which is much contracted in spirits, is furnished with a single series of short tentacles. The laminae of the stomach have a cartilaginous edge; they extend to the base of the cavity.

The details of the anatomy are given in Professor Steenstrup's paper, and he shows the darting stinging threads in the skin (fig. 8).

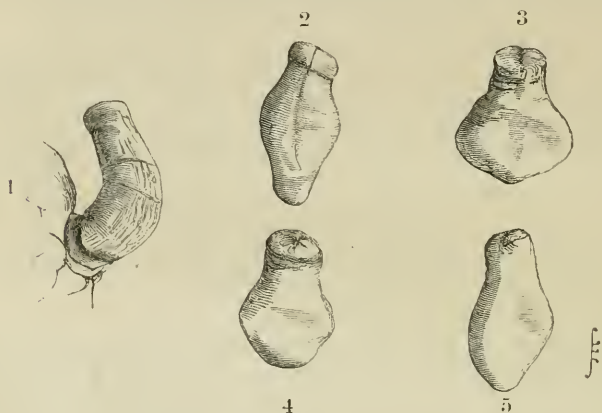


Fig. 1. *Pules cliffoni*.
2, 3, 4, 5. *Sphenopus marsupialis*.

SPHENOPUS MARSUPIALIS. (Figs. 2, 3, 4, 5.)

Sabella (die beutelförmige *Sabelle*), Schröter, Einleit. Conch. ii. p. 591. no. 19, t. 6. f. 21.

Sabella marsupialis, Gmelin, S. N. 3751.

Sphenopus marsupialis, Steenstrup, Oversigt Kgl. Dansk. Vidensk. Selsk. 1856, p. 37, t. 1. f. 1-8; M.-Edwards & Haime, Coral. i. 287.

Hab. Tranquebar (*Johns*).

The specimens here figured were collected at Pulo Faya, in the China Seas, by Capt. Perry of the ship 'Richard Cobden,' who has kindly presented specimens to the British Museum and to the Free Museum at Liverpool.

Var. bursiformis. The body variable in shape (figs. 2-5), more or less produced and compressed behind.

Hab. Massachusetts Bay, U. S. America.

B.M.

2. SIDISIA, Gray, P. Z. S. 1858, p. 582.

Coral free, cylindrical, simple, or developing lateral basal buds, giving it a more or less branched form.

SIDISIA BARLEEI, Gray, P. Z. S. 1858, p. 532, t. 10. f. 6.

Zoanthus couchii, var., Holdsworth, P. Z. S. 1858, p. 560.

Zoanthus couchii, var. *liber*, Gosse, Brit. S. Anem. 297, t. 9. f. 9.

Hab. Orkney, Brassy Island (*Mr. Barlee*).

II. *Coral attached; cells arising from a foliaceous expanded base.*

3. **EPIZOANTHUS.**

The base expanded, foliaceous (parasitic on shells); the cells cylindrical, simple, separate from each other from the base; tentacles numerous.

EPIZOANTHUS PAPILLOSUS.

Spongia suberea (part.), Johnston, Mag. N. H. vii. 494. f. 60.

Dysidea? papillosa, Johnston, Brit. Sponges, 109. f. 18, t. 16. f. 6, 7; Gray, P. Z. S. 1858, p. 531.

Zoanthus couchii (part.), Holdsworth, P. Z. S. 1858, p. 557, t. 10. f. 3.

Zoanthus couchii, var. *diffusa*, Gosse, Brit. Sea Anem. 298, t. 9. f. 10.

Hab. Coast of England; Coast of Massachusetts, U. S. B.M.

Dr. Johnston, though he described this animal as a sponge, very justly observed that it was "nearly allied to the *Alcyonium ocellatum* of Solander (*Zoophytes*, 180, t. 1. f. 6), whatever that may be."

This species is found entirely covering some shells which are inhabited by *Paguri*, or Hermit Crabs, on the coast of Massachusetts, in North America. Specimens were collected in forty-fathom water by Capt. Mortimer of the ship 'America,' and by him presented to the British Museum and the Free Museum at Liverpool.

It appears to envelope more than one species of shell, as the form of some is much more elongated and turreted than others. But the shells are entirely destroyed, probably absorbed by the Hermit Crab to make room for the enlargement of its body; for when the coral mass is cut through, the cavity, which has all the forms of the whorls of a spiral shell, seems only to be covered with the basis of the coral, strengthened by the sandy particles that are imbedded in it.

The coral covers the shell with a smooth coat, only leaving the mouth of the shell free for the emission of the crab. This coat is scattered with distinct radiating cylindrical bodies, thickened and rounded near the upper margin; the apex when expanded is flat, with close radiating white lines, and a central circular aperture.

One of these bodies is generally placed on the apex of the spire of the shell, and another on the front end of the aperture and the back of the shell; and the sides of the spire are furnished with from three to eight or nine similar bodies, which diverge from each other. The under surface of the body (that is to say, the part of it that is trailed along the ground as the animal walks) is smooth and free from any of these cylindrical bodies of the *Actinia*. The bodies differ in length, according to their age and the position they occupy on the surface of the shell, and they always diverge from each other;

and those on the lip and the edge of the shell are generally the largest, as they are in a position where they can obtain the most nourishment. They are gradually developed from the surface of the coral that covers the shell. They first appear as a small circular spot, which enlarges and gradually raises itself above the surface of the surrounding coral until it forms a cylindrical body, which is generally considerably higher than it is broad. The adult or well-developed body sometimes breaks off from the base, leaving a circular concave scar, with pores round its circumference, which is the basis of the ovaries of the animal.

4. GEMMARIA, Duchass. & Michel. Mém. Coral. des Antilles, 55.

Mammillifera, sp.

Palythoa, sp., Milne-Edw. Coral. i. 303.

Base expanded; polypes not soldered together.

Duchassaing and Michellot describe several species of this genus; to these add

GEMMARIA? SULCATA.

Zoanthus sulcatus, Gosse, Brit. Sea Anem. 303, t. 9. f. 7, t. 12. f. 2.

Hab. Devonshire.

Tentacles twenty-two, in two rows; upper half of polypes naked.

5. PALYTHOA, Lamx. Hist. Polyp. 361; Duchassaing & Michellot, Mém. Coral. des Antilles, 53, 1860.

Palythoa AA & AAA, Milne-Edw. Coral. 304.

Cavolina, sp., Schweiger.

Corticifera, Lesueur.

Mammillifera, Ehr., Blainv.

The polypes soldered side by side.

1. PALYTHOA MAMMILLOSA, Lamx.

L. stellata, Lamx.

Alcyonium mammilloso, Solander, Zooph. t. 1. f. 4, 5.

2. PALYTHOA AXINELLÆ, O. Schmidt, Sponges of the Adriatic, p. 61, t. 6. f. 1, 2.

Polype short, broad, on an expanded base, white when dry.

Hab. Adriatic. Parasitic on *Axinella cinnanomea* and *A. verrucosa*, O. Schmidt (Sponges of the Adriatic, pp. 61, 62). Esper called the latter sponge *Spongia verrucosa*, from the presence of this polype.

Professor Oscar Schmidt described a species of *Axinella* which has circular eight-rayed stars scattered on the surface and sunk in the substance of the sponge, under the name of *Axinella polypoides* (p. 62, t. 8. f. 5). He calls these stars *oscules*; but they are very unlike the oscule of any other sponge, and I think they may be parasitic *actinioid* polypes. Mr. Bowerbank, in his 'British Sponges' (t. 20. f. 307), figures a very similar body, which he describes as

a portion of the dermal surface of an undescribed sponge from the East Indies, having numerous depressed porous areas furnished with stomata, like protective organs. Mr. Tyler, F.L.S., has kindly shown me some specimens of the sponge mounted, as a transparent and as an opaque object; and they are very like a parasitic actinoid polype; but the rays are strengthened with spicules on the surface, and on the tips with some prominent ones (which form a pencil), unlike any *Actinia* I have seen, and so they are perhaps sponges. If so, they ought to form a genus, which may be called *Astrostoma*.

III. *The coral attached; the cells arising from a slender subcylindrical base.*

6. CAROLIA.

The base slender, subcylindrical, creeping; the cell cylindrical, separate, and far apart from the base.

CAROLIA COUCHII.

Zoanthus couchii, Johnston; Couch, Cornish Fauna, iii. 73, t. 15. f. 3; Johnston, Brit. Zoophytes, 202, t. 35. f. 9 (cop. Couch); Holdsworth, P. Z. S. 1858, p. 557, t. 10. f. 4-7 (not fig. 3).

Zoanthus couchii, var. *linearis*, Gosse, Brit. Sea Anem. 298, t. 10. f. 5.

Hab. Cornwall.

IV. *Polypes forming a network, sunk in sponges; the buds arising the upper or cephalic edge.*

7. BERGIA, Duchass. & Michellot, Coral. des Antilles, 54, 1860.

Alcyonium, sp., Lamk.

BERGIA SERPENS.

Alcyonium serpens, Lamk.

Bergia catenularis, Duch. & Michel. 54, t. 8. f. 12.

Hab. West Indies.

B.M.

V. *Polypes attached, solitary, with a rather expanded base.*

8. TRIGA.

The coral subcylindrical, solitary, attached, with a rather expanded base; outer coat coriaceous, sandy, concentrically wrinkled.

TRIGA PHILIPPINENSIS.

B.M.

Coral subcylindrical, clavate, rather narrowed near the base, concentrically wrinkled; end convex, obscurely radiately striated.

Hab. Philippines, attached to small pebbles (*Cuming*).

The coral varies from an inch to an inch and a half in length.

The genera *Iluanthos* of Forbes (Ann. of Nat. Hist. v. 1840, p. 184, t. 3. f. 1) and *Peachia*, Gosse (Trans. Linn. Soc. xxi. 267), may

belong to this family, and form a section of it which has a soft thin skin.

The genus *Edwardsia*, Quatrefages (Ann. des Sci. Nat. xviii. 65, 1842), and *Solanthus* of Gosse (Ann. Nat. Hist. xii. 1853, p. 157), may also belong to this tribe, and form a section characterized by the middle portion of the skin of the body being thickened, so as to form an imperfect tubular polyperoid, into which the soft anterior and posterior portion of the body are retracted for protection.

The *Edwardsia vestita* of Forbes (Ann. Nat. Hist. viii. 244. t. viii. 1842, and xii. 42, 1843) is most probably a *Cerianthus*, which forms a tube of agglutinated sand, like many Annelides, for the base of its body.

February 28, 1867.

Dr. J. E. Gray, F.R.S., V.P., in the Chair.

The Secretary called the attention of the Meeting to several recent additions to the Society's Menagerie, amongst which were—

1. A male example of the wild Swine of *Formosa* (*Sus taivanus*, Swinhoe), received by the ship 'Island Queen,' January 17th, having been obtained for Mr. Swinhoe by Mr. Gregory, H.M. Vice-Consul at Tamsuy, and forwarded to the Society by Mr. Swinhoe.

This animal was stated by Mr. Selater to be very nearly allied to, if not identical with, *Sus leucomystax* of Japan, of which the Society had previously possessed a female specimen, and was apparently very different from the curious red pig of the savages of Formosa, of which Mr. Swinhoe had sent three examples to the Society on the 25th of October, 1866, in the 'Maitland,' and which had been spoken of as *Sus taivanus* in a former communication on the subject (P. Z. S. 1866, p. 419).

2. A pair of Saiga Antelopes (*Saiga tatarica*, Pallas), received on deposit in November 1866, and recently purchased, as being apparently likely to do well in the Society's Menagerie. A drawing by Mr. Wolf was exhibited (Plate XVII.) showing the peculiar sheep-like appearance of this singular Antelope.

Mr. W. H. Flower exhibited a skull of the newly described Tapir of Panama (*Elasmognathus bairdi*, Gill, Pr. Acad. Sc. Phil. 1866, p. 183), belonging to the collection of the Royal College of Surgeons, and pointed out the characters which distinguish it from *Tapirus americanus* and *T. malayensis*, the most prominent of which was the complete osseous septum between the nasal apertures. Mr. Flower did not propose to give any further description of this animal at present, as it was understood that Professor Gill was preparing a complete account of it. The skull had been obtained by a collector at one of the stations of the Panama Railway.

590.643
S. F. BAIRD.

PROCEEDINGS

OF THE

SCIENTIFIC MEETINGS

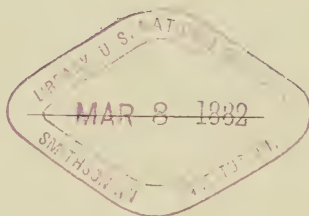
OF THE

ZOOLOGICAL SOCIETY

OF LONDON

FOR THE YEAR

1867.



PRINTED FOR THE SOCIETY,
AND SOLD AT THEIR HOUSE IN HANOVER SQUARE.

LONDON:
MESSRS. LONGMANS, GREEN, READER, AND DYER,
PATERNOSTER ROW.

PRINTED BY TAYLOR AND FRANCIS,
RED LION COURT, FLEET STREET.

590.612
2877
1867

LIST
OF THE
CONTRIBUTORS,

With References to the several Articles contributed by each.

	Page
ADAMS, ARTHUR, F.L.S. Descriptions of New Species of Shells from Japan. (Plate XIX.).....	309
ADAMS, DR. A. LEITH. On a New Fossil Dormouse from Malta	475
ADAMS, HENRY, F.L.S. Descriptions of New Species of Shells collected by Geoffrey Nevill, Esq., at Mauritius. (Plate XIX.)	303
Descriptions of New Species of Shells. (Plate XIX.) ..	307
See also BAIRD and ADAMS.	
ADAMS, HENRY, F.L.S., and ANGAS, G. F., F.L.S., C.M.Z.S. Description of a New Species of Land-shell belonging to the Genus <i>Caeliaxis</i> , II. Ad. & Angas. (Plate XLIII.) ..	907
ALLMAN, Prof., F.R.S., C.M.Z.S. Supplementary Note on <i>Potamogale relax</i>	256

ANGAS, GEORGE FRENCH, F.L.S., C.M.Z.S., &c.

Descriptions of Thirty-two New Species of Marine Shells from the Coast of New South Wales. (Plate XIII.) 110

A List of Species of Marine Mollusca found in Port Jackson Harbour, New South Wales, and on the adjacent Coasts, with Notes on their Habits &c. Part I. 185

Descriptions of Six New Species of *Helicidæ* from the Solomon Islands, Western Pacific. (Plate XLIII.) 888

On a New Genus and some New Species of Marine Mollusca from Port Jackson, New South Wales. (Plate XLIV.) 908

A List of Species of Marine Mollusca found in Port Jackson Harbour, New South Wales, and on the adjacent Coasts, with Notes on their Habits &c. Part II. 912

See also ADAMS and ANGAS.

BAIRD, WILLIAM, M.D., F.R.S., and ADAMS, HENRY, F.L.S.

Notes upon some interesting Chinese Shells, with a Description of Two or Three New Species of *Unionidæ*, collected at Shanghai by JONES LAMPREY, M.D., 67th Regiment, C.M.Z.S. (Plate XXVI.) 489

BARBOZA DU BOCAGE, Prof. J. V., F.M.Z.S.

Batraciens Nouveaux de l'Afrique occidentale (Loanda et Benguella) 843

BARTLETT, A. D., Superintendent of the Society's Gardens.

Remarks on the Breeding of the Rufous Tinamou (*Rhyzochotis rufescens*) in the Society's Menagerie 687

Notes on the Habits of the Lyre-bird in Captivity 688

Remarks on the food of the Walrus 819

BARTLETT, E. See SCLATER, P. L.

BEAVAN, Lieut. R. C., C.M.Z.S.

Notes on the Panolia Deer (*Cervus eldi*) 759

	Page
BENNETT, GEORGE, M.D., F.Z.S.	
Letter relating to the rediscovery of <i>Casuarium australis</i> . . .	473
 BLANFORD, WILLIAM T., Assoc. Roy. School of Mines, C.M.Z.S. &c.	
Letter referring to the occurrence of a species of <i>Platanista</i> in the Irrawaddi	179
On a New Species of <i>Callene</i> from the Pulney Hills in Southern India. (Plate XXXIX.)	832
 BLYTH, EDWARD, C.M.Z.S.	
Remarks on an Indian Quail (<i>Rollulus superciliosus</i>) . . .	474
Exhibition of Drawings of the Horns of various Indo- Chinese species of Deer	565
Remarks on Two Specimens of Crows from Australia . . .	565
Notes upon Three Asiatic Species of Deer	835
 BOWERBANK, J. S., LL.D., F.R.S. &c.	
On <i>Hyalonema mirabile</i> . (Plates IV. & V.)	18
Additional Observations on <i>Hyalonema mirabile</i>	350
On <i>Alcyoncellum speciosum</i>	351
On <i>Hyalonema lusitanicum</i>	901
 BURMEISTER, Dr. H., F.M.Z.S., Director of the Public Museum, Buenos Ayres.	
Preliminary Observations on the Anatomy of <i>Pontoporia</i> <i>blainvillii</i>	484
Preliminary Description of a New Species of Finner Whale (<i>Balænoptera bonaërensis</i>)	707
 BUTLER, ARTHUR G., F.Z.S., Assistant, Zoological Depart- ment, British Museum.	
Note on the Identity of certain Species of <i>Lycænidæ</i> . . .	34
Description of a New Genus of Diurnal Lepidoptera be- longing to the Family <i>Erycinidæ</i>	37

	Page
Descriptions of some New Species of <i>Satyridæ</i> belonging to the Genus <i>Euptychia</i> . (Plates XI. & XII.)	104
Remarks upon the Fabrician species of the Satyride Genus <i>Mycalesis</i> ; with Descriptions, and Notes on the named varieties	718
Note on the <i>Nymphalis caledonia</i> of Hewitson	873
 COX, JAMES C., C.M.Z.S.	
Characters of Four New Species of Australian Land-shells	39
On some New Species of Australian Land-shells	722
 CRISP, EDWARDS, M.D., F.Z.S.	
On some Points connected with the Anatomy of the Hippopotamus	601
On the Form, Size, and Structure of the Viscera of the Hippopotamus, as compared with the same parts in the members of the Pachyderm Family, and in some other Animals	689
 CROTCH, GEORGE R., M.A.	
On the Coleoptera of the Azores. (Plate XXIII.)	359
 DAY, FRANCIS, F.Z.S., F.L.S., Surgeon, Madras Army.	
On the Fishes of the Neilgherry Hills and Rivers around their bases	281
On some Fishes from the Wynaad	347
On some New or imperfectly known Fishes of Madras	558
On some New or imperfectly known Fishes of India	699
On some New or imperfectly known Fishes of Madras	935
 Dow, Captain, F.Z.S.	
Extracts from Letters relating to <i>Tapirus bairdi</i>	241, 891
 ELLIOT, Sir WALTER, K.C.S.I., F.Z.S.	
Letter to Prof. Owen relating to a previous paper by Prof. Owen on Indian Cetacea	474

	Page
FLOWER, W. H., F.R.S., F.L.S., F.Z.S., Conservator of the Museum of the Royal College of Surgeons.	
Exhibition of the Skull of a Tapir (<i>Elasmognathus bairdi</i> , Gill)	240
Notice of a Memoir on the Osteology of the Sperm-Whale (<i>Physeter macrocephalus</i>).....	823
Notes on the Visceral Anatomy of <i>Hyomoschus aquaticus</i>	954
GOULD, JOHN, F.R.S., F.L.S., V.P.Z.S., &c.	
On a New Australian Parrakeet	182
Description of a New Australian Bird pertaining to the genus <i>Malurus</i>	302
On the Australian Genus <i>Climacteris</i> , with a Description of a New Species	975
GRAY, DR. J. E., F.R.S., V.P.Z.S.	
On the Skull of the Chinese Pug-nosed Spaniel or Lap- dog.....	40
On a New Geckoid Lizard from Ceylon. (Plate IX.) ..	98
Notes on <i>Hyalonema lusitanicum</i> , and on the Genus in general	117
Additional Note on <i>Corallium johnsoni</i>	125
On <i>Placospongia</i> , a New Generic Form of <i>Spongiadae</i> in the British Museum	127
Notice of <i>Lutronectes whiteleyi</i> , an Otter from Japan ..	180
Notes on <i>Zoanthinae</i> , with Descriptions of some New Ge- nera	233
Note on the "Hwang-Yang," or Yellow Sheep of Mon- golia	244
Notes on the Skulls of the Cats (<i>Felidae</i>)	258
Notes on certain Species of Cats in the Collection of the British Museum. (Plates XXIV. & XXV.)	394
Notes on the Arrangement of Sponges, with the Descrip- tions of some New Genera. (Plates XXVII. & XXVIII.)	492

	Page
Note on a New Species or Variety of Lemur in the Society's Gardens. (Plate XXXI.)	596
Notes on the Variegated or Yellow-tailed Rats of Australasia	597
Notes on the Specimens of <i>Calyptorhina</i> in Mr. Cuming's Collection	726
Additional Observations on the Species of Cats (<i>Felidæ</i>) in the British Museum	874
Notice of a New Species of American Tapir, with Observations on the Skulls of <i>Tapirus</i> , <i>Rhinocærus</i> , and <i>Elasmognathus</i> in the Collection of the British Museum. (Plate XLII.)	876
Description of <i>Ateles bartlettii</i> , a New Spider Monkey from the River Amazons. (Plate XLVII.)	992
Notes on <i>Catillus</i> , Humphrey, or <i>Navicella</i> , Lamarek, with Descriptions of Two New Genera	993
Description of <i>Saulea</i> , a New Genus of <i>Ampullariadæ</i> from Sierra Leone	1000
Observations on Dr. Bowerbank's Paper on <i>Hyalonema lusitanicum</i>	1001
Observations on the Preserved Specimens and Skeletons of the <i>Rhinocerotidæ</i> in the Collection of the British Museum and Royal College of Surgeons, including the Descriptions of Three New Species	1003
 GÜNTHER, ALBERT, M.A., Ph.D., M.D., F.R.S., F.Z.S.	
Descriptions of some New or little-known Species of Fishes in the Collection of the British Museum. (Plate X.)	99
 HARTLAUB, Dr. G., F.M.Z.S.	
Remarks on a Communication of Prof. Schlegel in the Society's 'Proceedings' for 1866	821
Report on a Collection of Birds formed in the Island of Zanzibar by Dr. John Kirk	823

	Page
On a Collection of Birds from some less-known Localities in the Western Pacific. (Plate XXXVIII.)	828
 HECTOR, Dr., F.R.S.	
Notice of an Egg of the Great Moa (<i>Dinornis gigantea</i>) containing remains of an embryo, found in the province of Otago, New Zealand	991
 HILL, E. S., C.M.Z.S.	
On the Passage of the Young to the Pouch in the Kau- garoos (<i>Macropus</i> and <i>Halmaturus</i>). Communicated, with Remarks, by Prof. Owen, F.R.S., F.Z.S., &c.	475
 HUTTON, Capt. T., C.M.Z.S.	
On the Geographical Range of <i>Semnopithecus entellus</i> . .	944
 HUXLEY, THOMAS H., Ph.D., F.R.S., V.P.Z.S.	
On the Classification of Birds; and on the Taxonomic Value of the Modifications of certain of the Cranial Bones observable in that Class.	415
 JOHNSON, JAMES YATE, C.M.Z.S.	
Description of a New Genus of <i>Spinacidæ</i> , founded upon a Shark obtained at Madeira.	713
Descriptions of a New Genus and a New Species of Macru- rous Decapod Crustaceans belonging to the family <i>Penæidæ</i> , discovered at Madeira	895
 KAUP, Dr. J. J., C.M.Z.S., Director of the Grand-Ducal Mu- seum, Darmstadt.	
On the <i>Nisi</i> and <i>Astures</i> of the Indian Archipelago and of New Holland.	168
 KIRK, Dr. JOHN, C.M.Z.S.	
Letter relating to the Animals of Zanzibar	952

	Page
KREFFT, GERARD, F.L.S., C.M.Z.S.	
Notes on the Mammals and Birds of Cape York, with Descriptions of Two New Rodents of the Genus <i>Hapalotis</i> . . .	316
Description of a New Species of Cassowary from Northern Queensland	482
Descriptions of some New Australian Freshwater Fishes. .	942
LILLJEBORG, WILHELM, F.M.Z.S., Professor of Zoology at the University of Upsala in Sweden.	
Description of <i>Halcrosia afzelii</i> , a New Crocodile from Sierra Leone, West Africa.	715
MACALISTER, ALEXANDER, M.D., C.M.Z.S., Demonstrator of Anatomy, Royal College of Surgeons, Ireland.	
On some Points in the Anatomy of <i>Globiocephalus svineval</i> (Gray)	477
MIVART, ST. GEORGE, F.Z.S., F.L.S., Lecturer on Comparative Anatomy at St. Mary's Hospital.	
On the Skull of <i>Indris diadema</i> . (Plate XVIII.)	247
On <i>Plethodon persimilis</i> of Gray	695
Notes on the Myology of <i>Iguana tuberculata</i>	766
Additional Notes on the Osteology of the <i>Lemuridæ</i>	960
MOORE, FREDERIC.	
On the Lepidopterous Insects of Bengal. Part II. (Plates VI. & VII.)	44
On the Lepidopterous Insects of Bengal. Part III. (Plates XXXII. & XXXIII.)	612
MUELLER, DR. F., C.M.Z.S.	
Letter concerning the Australian Cassowary	241

	Page
MURIE, JAMES, M.D., F.G.S., Prosector to the Society.	
Remarks on an Antelope from the White Nile, allied to or identical with the <i>Kobus sing-sing</i> of Gray. (Plate II.) . . .	3
On <i>Cygnus buccinator</i> , Richardson, and <i>Cygnus passmori</i> , Hincks	8
On the Cause of Death of the Sea-Bear (<i>Otaria hookeri</i>) lately living in the Society's Gardens	243
On the Tracheal Pouch of the Emu (<i>Dromæus novæ-hol- landiæ</i> , Vieill.)	405
On the Dermal and Visceral Structures of the Kagu (<i>Rhi- nochetus jubatus</i>)	475
Notice of a Memoir on the Anatomy of the Pilot Whale (<i>Globiocephalus melas</i>)	686
On the Platyrhine Wombat (<i>Phascolomys platyrhinus</i> , Owen) (Plate XXXV.)	798
NATION, Prof. W. See SCLATER, P. L.	
NEWTON, ALFRED, M.A., F.L.S., F.Z.S., Professor of Zoo- logy and Comparative Anatomy in the University of Cambridge.	
On some New or Rare Birds' Eggs. (Plate XV.)	161
Notice of an original picture of a Didine Bird	179
NEWTON, EDWARD, M.A., C.M.Z.S.	
Descriptions of some New Species of Birds from the Sey- chelles Islands. (Plate XXII.)	344
Correction of a Misprint in the Society's 'Proceedings.' . .	821
OWEN, Prof. R., F.R.S. &c.	
Notice of two Memoirs on the extinct Birds of the Genus <i>Dinornis</i>	891
See also HILL, E. S., and ELLIOT, Sir WALTER, K.C.S.I., F.Z.S.	

	Page
PETERS, DR. WILLIAM, F.M.Z.S.	
Note on the Homology of the Tympanic Bone	953
PLAYFAIR, Lieut.-Colonel R. L., F.Z.S.	
On the Fishes of Cachar. (Plate III.)	14
The Fishes of Seychelles	846
RAMSAY, EDWARD P., C.M.Z.S.	
Note on the Nidification of <i>Baza subcristata</i>	392
Note on the Eggs of the Australian Stilt-Plover (<i>Himantopus leucocephalus</i>)	600
ROWLEY, GEORGE DAWSON, M.A., F.Z.S.	
On the Egg of <i>Aepyornis</i> , the Colossal Bird of Madagascar	892
SALVIN, OSBERT, M.A., F.L.S., F.Z.S., &c.	
On some Collections of Birds from Veragua. (Plate XIV.)	129
See also SCLATER and SALVIN.	
SCLATER, PHILIP LUTLEY, M.A., Ph.D., F.R.S., Secretary to the Society.	
Exhibition of Mexican Birds, and Characters of a New Species of <i>Zonotrichia</i> . (Plate I.)	1
Extracts from Letters received from Mr. E. Bartlett	2
Notice of a New Species of Ratel (<i>Mellivora leuconota</i>). (Plate VIII.)	98
Notices of Additions to the Menagerie.	179
Notes upon some Parrots living in the Society's Menagerie. (Plate XVI.)	183
Notices of Additions to the Society's Menagerie. (Plate XVII.)	240
Remarks on Specimens of Snakes (<i>Boidea</i>) in the Society's Menagerie	315
Remarks on Gulls (<i>Laridae</i>) living in the Society's Mena- gerie	315

	Page
Notes on the Birds of Chili	319
On the Birds of the Vicinity of Lima, Peru. With Notes on their Habits; by Prof. W. NATION, of Lima, C.M.Z.S. (Part II.) (Plates XX. & XXI.)	340
Announcement of the arrival of a Lyre-bird (<i>Menura superba</i>) in the Society's Gardens	391
Report of the birth of a young Male Giraffe, and List of Giraffes that have lived in the Society's Gardens.....	391
Notices of Additions to the Society's Menagerie	473
Exhibition of a Skull of <i>Tapirus bairdi</i> from Nicaragua..	473
Notices of Additions to the Society's Menagerie	686
Exhibition of a rare Snake (<i>Siphlophis fitzingeri</i>).....	687
Exhibition of the Nest and Eggs of the Nutcracker (<i>Nucifraga caryocatactes</i>)	687
Notices of Additions to the Society's Menagerie	815
Notice of the arrival of a collection of Animals from Calcutta	820
Notices of Additions to the Menagerie.....	890
Notice of the Exhibition of a Skin of <i>Chionis minor</i>	891
Remarks on the Breeding of the Eland in Captivity	953
 SCLATER, P. L., F.R.S., and SALVIN, OSBERT, M.A., F.Z.S.	
List of Birds collected on the Blewfields River, Mosquito Coast, by Mr. Henry Wickham	278
List of Birds collected by Mr. Wallace on the Lower Amazons and Rio Negro. (Plates XXIX. & XXX.).....	566
Catalogue of Birds collected by Mr. E. Bartlett on the River Huallaga, Eastern Peru, with Notes and Descriptions of New Species. (Plate XXXIV.)	748
List of Birds collected at Pebas, Upper Amazons, by Mr. John Hauxwell, with Notes and Descriptions of New Species. (Plate XLV.).....	977
On Peruvian Birds collected by Mr. H. Whitely. (Part I.) (Plate XLVI.)	982

THOMSON, J. H.

Letter relating to the occasional Deformity of the Lower
Jaw of the Sperm-Whale 246

TRISTRAM, Rev. H. B., M.A., F.L.S., C.M.Z.S.

On New Species of Birds from South Africa 886

ERRATA ET EMENDANDA.

- Page 15, line 20, for "*S. fasciatus*" read "*T. fasciatus*."
 ,, 97, line 23, for "*C. concatenalis*" read "*B. concatenalis*."
 ,, 282, line 24, for "*Roach*" read "*Loach*."
 ,, 292, line 10, for " $1\frac{1}{2}$ from end of snout" read " 1 to $\frac{3}{4}$ from end of
snout."
 ,, 296, line 1, for "*cocoa*" read "*cocsa*."
 ,, 396, line 23, for "Plate XXV." read "Plate XXIV."
 ,, 512, line 13, for "*Isodictya*" read "*Orthodictya*."
 ,, 522, line 33, for "*Abila*" read "*Palisia*."
 ,, 569, line 32, for "fig. 1" read "fig. 2."
 ,, 570, line 15, for "fig. 2" read "fig. 1."

LIST OF PLATES.

Plate		Page
I.	<i>Zonotrichia boucardi</i>	1
II.	<i>Antilope sing-sing</i>	3
III.	<i>Ophiocephalus stewartii</i>	14
IV. } V. }	<i>Hyalonema mirabile</i>	18
VI. } VII. }	New Indian Lepidoptera	44
VIII.	<i>Mellivora leuconota</i>	98
IX.	<i>Geckoella punctata</i>	98
X.	<i>Xiphochilus fasciatus</i>	99
XI. } XII. }	New Species of <i>Euptychia</i>	104
XIII.	New Australian Shells	110
XIV.	<i>Buarremon crassirostris</i>	129
XV.	New or rare Birds' Eggs	161
XVI.	<i>Lorius chlorocercus</i>	183
XVII.	<i>Saiga tatarica</i>	240
XVIII.	Skull of <i>Indris diadema</i>	247
XIX.	New Shells	303
XX. } XXI. }	<i>Poospiza bonapartii</i>	340
XXII.	<i>Coracopsis barklyi</i>	344
XXIII.	New Azorean Coleoptera	359
XXIV. } XXV. }	<i>Gueparda guttata, jr.</i>	394
XXVI.	<i>Pardalina warwickii</i>	489
XXVII. { XXVII. {	Fig. 1. <i>Dactylocalyx subglobosa</i>	492
XXVIII. { XXVIII. {	Fig. 2. — <i>pumicea</i>	492
XXVIII. { XXVIII. {	Fig. 1. <i>Corbitella speciosa</i>	492
XXVIII. { XXVIII. {	Fig. 2. <i>Heterotella corbicula</i>	492
XXIX. } XXX. }	<i>Turdus phæopygus, jr.</i>	566
XXX. { XXX. {	Fig. 1. <i>Hylophilus semicinereus</i>	566
XXX. { XXX. {	Fig. 2. — <i>rubrifrons</i>	566

Plate	Page
XXXI. <i>Prosimia flavifrons</i>	596
XXXII. } New Indian Lepidoptera	612
XXXIII. }	
XXXIV. <i>Chætura brachycerca</i>	748
XXXV. <i>Phascolomys platyrhinus</i>	798
XXXVI. <i>Felis aurata</i>	816
XXXVII. <i>Gazella sæmmerringi</i>	817
XXXVIII. <i>Monarcha godefroyi</i>	828
XXXIX. <i>Callene albiventris</i>	832
XL. <i>Diagramma punctatissimum</i>	
XLI. <i>Holacanthus ignatius</i>	} 846
XLII. <i>Elasmognathus bairdi</i>	876
XLIII. New Land-shells from the Solomon Islands	888
XLIV. New Australian Shells	908
XLV. <i>Percnostola fortis</i>	977
XLVI. <i>Muscisaxicola rubricapilla</i>	982
XLVII. <i>Ateles bartlettii</i>	992